

# Access Fitting Components



## • SI Fittings

A unique way of way of connecting handrail tubes.

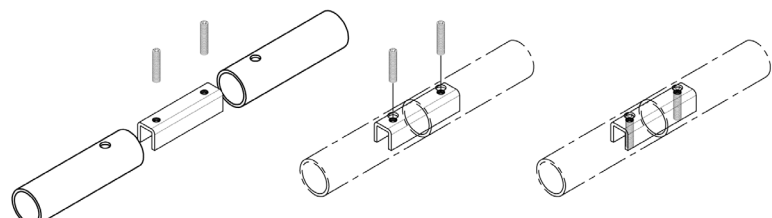
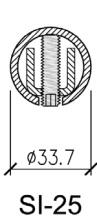
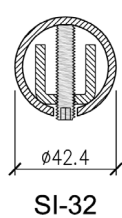
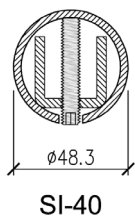
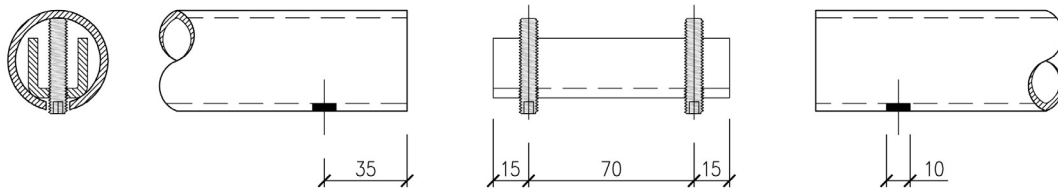
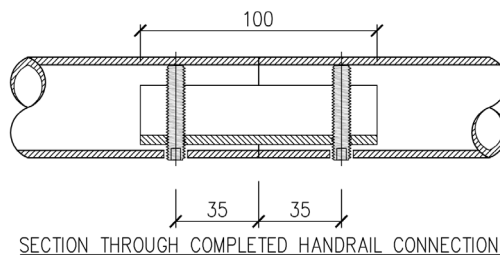
SI internal joint fittings allow a straight splice butt joint to be made in handrail tubes, at the same time aligning the two tubes perfectly everytime.

The joints use integral screws working through and with the tube wall to form a very strong joint and provide an aesthetic finish

- Fittings size are made specific to standard tube sizes
- Easy to install
- Re-usable
- Heavy duty material
- Available in either galvanised or stainless steel finishes
- Adopted in water authority asset standards



UK Patent 1204699.1



For further information contact: [sales@onesiteltd.com](mailto:sales@onesiteltd.com)